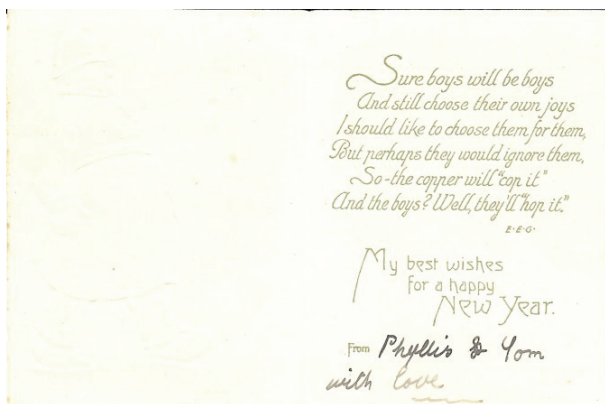


# Scout and Guide Stamps Club

# BULLETIN

Volume 57 No. 6 (Whole No. 332)



NOVEMBER / DECEMBER 2013



## Editorial

Well, here we go the final issue for 2013 and there were times when I didn't think that I'd still be around to publish this one. I am none the wiser regarding my overall situation but I do see the cardiologist on 11th December so I may finally get some news for 2014.

I'm trying to get back to normal, as much as I can, and have been progressing with the Gang Show - but facing increasing controls from our new DC and his "Management Team". I'm pretty sure that this will be my last one as I really don't need the hassle any more. So far we have a cast of 70, which is a bit up on 2013, and they have allowed a few over the over 25s a final year but emphasising that this is the very last time. I still can't see the problem but whoever takes over from me as Producer will have to sort all that out.

There's a good mix of articles in this issue, including several more of the humorous Scouting postcards. I still have quite a few, originating in the UK, Belgium, Holland, Czechoslovakia and Germany but more are always welcome.

The little one page review for the forthcoming New Zealand Jamboree shows what can be achieved in a relatively small space and perhaps it could encourage a few more similar articles for the future.

I'll finish by wishing you all a very Happy Christmas and a successful, peaceful and prosperous New Year in 2014.

Terry Simister

### **FUTURE COPY DATES**

January 19th and March 16th

Please send copy, including photos, electronically - where possible.

### **FUTURE MEETINGS UPDATE**

**As mentioned before we are still intending to hold regular meetings in the UK during the Stampex and Thematix Exhibitions each year.**

**The next of these will be at**

**Spring Stampex: 19th - 22nd February 2013, with our meeting on 22nd**

**and then at Thematix: 11th - 12th July at Chessington, as before, with our AGM on 12th July**

**and finally Autumn Stampex: 17th - 20th September with our meeting on 20th.**

As international aid now arrives in the Philippines their large Scouting community, numbering nearly one and a half million members, must have been devastated too. Scouting has always been a major youth organisation there, the country hosting many major international events including the World Jamboree in 1959. Many of these have been commemorated with stamp issues, postmarks and other philatelic items. Disaster has struck their Scouts before as back in 1963 their entire contingent flying to the World Jamboree were killed in an air crash - later, in 1970, a stamp was issued showing their memorial amphitheatre, Pasonanca Park.

On a happier note, Christmas is approaching, with the traditional exchange of cards between family and friends. In recent years people do not send so many, partly due to the high postage costs. Also the younger generation especially choose to send their greetings by electronic ways which I find difficult to put on the mantelpiece.

Some Scout groups will be operating local delivery services for cards with colourful and highly collectable labels and their services should be supported as the funds generated support Scouting and other charities.

On behalf of all the Committee we wish our members Season's Greetings and a Prosperous New Year.



1970 - Scout Memorial Amphitheatre



1972 - Asia Pacific Scout Conference overprint and revalue on an earlier "Presidential Sayings" set. The saying is very poignant at present.

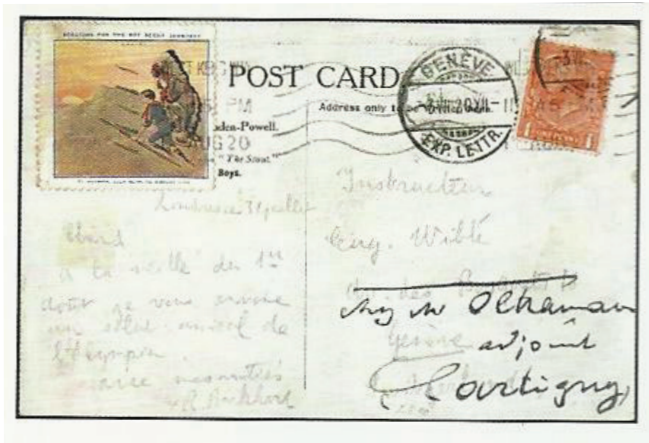


No doubt some of our members visited the Röllli Online Auction website to view the first part of the Walter Grob's Gold Medal collection of Scout stamps and covers. This internet auction sale held in February, took place at Lucerne in Switzerland. The



second part, being held next spring will be a public auction, when the scarcer material from his collection will be sold. Some of the larger lots in this sale consisted of a number of covers, but unfortunately the late Walter had an unfortunate habit of adding labels to many of these. Not only did he add a label, but sometimes they did not even apply to the cover, or its year of issue. However there were one or two exceptions that were tied to the postcard or cover. The highest results were made on those that I have illustrated with the approximate prices for individual lots shown, but to this must be added the buyer's premium. This 1929 Meter cancel made £740, €857, US\$1162. The





1936 registered Maidstone, Kent cachet on cover £365, €423, US\$573, and the 1920 postcard with a tied Jamboree label sent to Geneva made £635. €857, US\$ 995.

Information has now been received regarding the 10<sup>th</sup> Euro-Scout International Scout stamp exhibition which will be held at Taastrup, near Copenhagen in Denmark from August 6-10. This bi-annual event is attended by collectors from throughout the world. If you have never taken part in one of these meetings, I can highly recommend you visit this show, and I would be pleased to send you details.

As many of you know, I and many of our collecting friends sell Scout material on eBay. The site has grown considerably over the years, but sometimes they do not always work to the seller's advantage. Recently they also started charging 10% commission on the postal charge as well as on the actual item. Already they charge commission on the postage when buyers pay by PayPal, which they also own, so they are now having "two bites at the cherry".

\*\*\*\*\*  
\*\*\*\*\*

**Please don't forget that if you would like to receive a copy of this issue and all further issues of the Bulletin by electronic mail just send the following message to me at [terry.simister@blueyonder.co.uk](mailto:terry.simister@blueyonder.co.uk) :-  
I would like to receive future copies of the Scout and Guide Stamps Club Bulletin by electronic mail and the appropriate documents should be sent to the address used for this transmission.**

# Scout collection auctioned in Switzerland

## Rölli Auctions International stamp auctions

■ 54<sup>th</sup> International Rölli Auction:  
February, 6<sup>th</sup>-8<sup>th</sup> 2014



Rölli-Schär Ltd.

Seidenhofstrasse 2  
CH-6003 Lucerne

Tel. +41 41 226 02 02  
Fax +41 41 226 02 01

info@roelliphila.ch  
www.roelliphila.ch

In our forthcoming auction  
we are proud to offer the out-  
standing and internationally  
awarded Scout collection of  
Walter Grob.



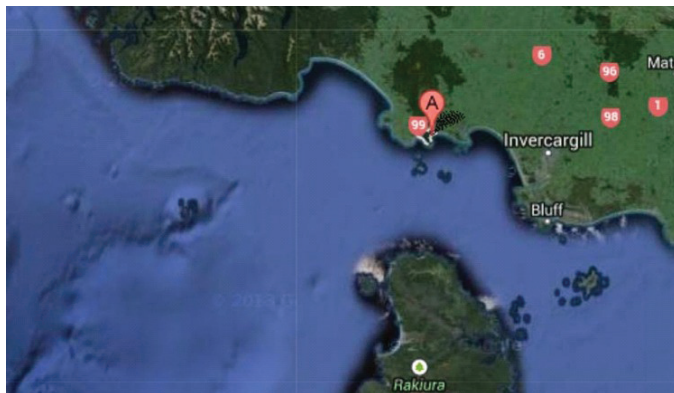
## On our Summer Holidays....

by Paul Van Herpt

For the vast majority of us, the summer season is a good time to go on holiday, to get away from our usual environment, and not having to worry about the many things that we involve ourselves in as part of our daily lives. We don't always really get away from it all, we always take our baggage with us, both literally and figuratively.

We jump now to the summer of 1966, the southern hemisphere summer, and we are in early January. Four and a half thousand Scouts are heading to Wellington, not your usual holiday destination. Their holiday is to participate in the Progress Scout Jamboree at the Trentham Memorial Park. At the other end of the country, a young philatelist from Christchurch is travelling along the southern coast of the South Island. In his travels the figurative baggage of this philatelist to be was his hobby, which meant visiting the Post Offices of the little towns they

passed to get examples of the local postmarks.



*Colac Bay, marked A, west of Invercargill on the southern coast of the South Island, and directly north of Stewart Island*

One of these towns was the small settlement of Colac Bay, best known for its surf beach. In the summer this settlement grew with holiday makers there to enjoy that surf. It has a usual population (2006) of 1500 and was founded in the 1830's as a whaling station.

In the town's Post Office (which it had then) a helpful assistant offered the new stamp

to mount on the envelope he had to get the postmark on. The offer was accepted and it was even the bottom corner stamp complete with colour margin imprints.

The problem, however, was it was January 4<sup>th</sup> and the stamp, for the Scout Jamboree at Trentham, was not due to be issued until the 5<sup>th</sup> !

In 1966, the 1<sup>st</sup> and 2<sup>ND</sup> January were a Saturday and Sunday and are public holidays in New Zealand. When this occurs in the weekend the first two weekdays become those holidays which should have been the 3<sup>rd</sup> and the 4<sup>th</sup> Therefore when the stamp was issued on the 5<sup>th</sup> it was effectively the first business day of the year.



So why was Colac Bay Post Office open anyway? This was because it was a holiday town, and the Post Office was part of the general store and such did open on public holidays.

The new stamps could not have been distributed to all the offices around the country in 1966, and may even have been distributed and embargoed prior to Christmas 1965. Of all the distributed stamps, at least one was sold early. We cannot say it was used before the date as the postmark was cancelled to order and not mailed, but it was certainly sold early.



*The 1966 Scout Jamboree stamp on piece and cancelled to order from Colac Bay a day prior to the official release*

\*\*\*\*\*

## NEW ANNUAL MEMBERSHIP FEES

My thanks to those who pointed out an anomaly in the schedule of new membership fees which are applying from 1st April, 2014. The electronic service fee should, of course, be the same for the whole world. The fees should be:-

TYPE	POSTAL SERVICE		ELECTRONIC SERVICE	
	1 YEAR	5 YEARS	1 YEAR	5 YEARS
<b>UK INDIVIDUALS AND SECTIONS</b>	£18	£85	£12	£55
<b>EUROPE AIRMAIL</b>	£21	£100	£12	£55
<b>REST OF WORLD AIRMAIL</b>	£26	£125	£12	£55
<b>JUNIORS ALL WORLD</b>	£6	NOT AVAILABLE	£5	NOT AVAILABLE

## 20th NEW ZEALAND SCOUT JAMBOREE

This event is being held at Manfeild Park, in Feilding from 28th December 2013 to 6 January 2014. Two previous Jamborees have been held on this site, in 1984 and 2005.

For the philatelic collector, there will be some items of interest;

- 1 - A postcard, a "lazy letter" style card with options to tick to send their message
- 2 - A 70c CAL (customer advertising label) stamp featuring the Jamboree logo. These will be available for sale at the event. (*mock up only shown to right*)



- 3 - A special postmark from Feilding, 6th January 2014. This is the first time since the 1987 Jamboree (11th) in Rangiora that we have had an official postmark for the Jamboree.



There will not be a special Post Office at the Jamboree as there was many years ago. Rather, items for postmarking will be collected during the Jamboree and on 6th January taken to the Feilding Mail Centre for postmarking and mailing. This day is the last day of the event which may seem unusual, but this is due to the weekend and public holiday days over the New Year period making options pretty limited.

For those not attending the event and would like to obtain copies, these can be pre-ordered from

Paul van Herpt, at [paulvanherpt@gmail.com](mailto:paulvanherpt@gmail.com) or P O Box 25054, Christchurch 8144, New Zealand, before 25th December 2014

- |         |                         |                                      |
|---------|-------------------------|--------------------------------------|
| Prices; | Card, CAL, and postmark | \$NZ 2.00 each                       |
|         | CAL, single stamps      | \$NZ 1.25 each (blocks available)    |
|         | Postmark only           | Your own stamped addressed envelopes |

**Experience of your Scout time!**

Message on front & below:

\_\_\_\_\_

\_\_\_\_\_

\_\_\_\_\_

\_\_\_\_\_

\_\_\_\_\_

PLEASE PLACE STAMP HERE

\_\_\_\_\_

\_\_\_\_\_

\_\_\_\_\_

20<sup>th</sup> New Zealand Scout Jamboree - Manfeild Park - Feilding



## SALES SERVICE

The following items are available. Orders to Peter J.Duck, 9 Broadlands Court, Kew Gardens Road, Richmond, Surrey TW9 3HW..Payment with order please: cheques payable to P.J.Duck, USA \$ bills or EURO notes accepted at current rates. Postage extra – Inland 70p for 1<sup>st</sup> class post (any packets weighing over 100 gr will be sent by 2<sup>nd</sup> class post). Overseas £1.30 for stamp orders only, covers/cards orders £1.75.

### A MISCELLANY FROM STOCK:

ANT87U ANTIGUA & BARBUDA 1987 16 <sup>th</sup> World Jamboree (4)	used	2.50
ANT87SU ANTIGUA & BARBUDA 1987 16 <sup>th</sup> World Jamboree MS	used	1.75
BEZ87U BELIZE 1987 Golden Jubilee of Guiding (4)	used	3.00
BEZ87SU BELIZE 1987 Golden Jubilee of Guiding MS	used	2.75
CAR95 CENTRAL AFRICAN REP 1995 Scouts/butterflies/fungi (6)	mint	5.00
CAR95S CENTRAL AFRICAN REP 1995 Scouts/butterflies/fungi MS	mint	3.00
CHD85 CHAD 1985 Philexafrique triptych (with Scouts)	mint	1.80
DK59L DENMARK 1959 50 <sup>th</sup> Anniversary of Scouting – label		0.20
DK72L DENMARK 1972 KFUK Guides National Camp 2 x labels self adhesive – diff colours		0.40
DOM94SU DOMINICA 1994 10 <sup>th</sup> Caribbean Jamboree MS	used	4.00
FRA-L FRANCE Scouts de France membership labels 1953-56 (4)		0.20
GB89C G.B. 1989 postcard commemorating 60 <sup>th</sup> Anniversary of Arrowe Park Jamboree 1929		0.25
GB-NR G.B. publicity card for Network Russia Scout Fellowship (not postcard)		0.20
GB07FC G.B. 2007 21 <sup>st</sup> World Jamboree Friendship Card		0.30
GRE93U GREENLAND 1993 50 <sup>th</sup> Anniversary of Scouting (1)	used	0.75
GRE93SU GREENLAND 1993 50 <sup>th</sup> Anniversary of Scouting + Red Cross MS	used	4.00
GRN88S GRENADA 1988 16 <sup>th</sup> World Jamboree MS	mint	1.75
GRD88S GRENADA GRENADINES 1988 16 <sup>th</sup> World Jamboree MS	mint	1.75
GUI92S GUINEA 1992 “Sharing Cultures” – Scouts & Care Bears MS	mint	3.00
GUY91SU GUYANA 1991 17 <sup>th</sup> World Jamboree MS	used	2.40
ICE-L ICELAND Scout Christmas Charity labels 1958 – 1972 (8)		1.20
IND84 INDONESIA 1984 Children’s Day - with Scouts (4)	mint	2.25
KEN82S KENYA 1982 75 <sup>th</sup> Anniversary of World Scouting MS	mint	2.50
KOR62 KOREA 1962 40 <sup>th</sup> Anniversary of Scouting (2)	mint	1.00
KOR62S KOREA 1962 40 <sup>th</sup> Anniversary of Scouting 2 x MS	mint	2.00
LES87SU LESOTHO 1987 16 <sup>th</sup> World Jamboree MS	used	1.75
LBY80S LIBYA 1980 Arab Scout & Guide Jamborees 2 x MS	mint	2.00
LBY83S LIBYA 1983 2 <sup>nd</sup> Islamic & 15 <sup>th</sup> Pan Arab Jamboree MS	mint	1.50
LIT46 LITHUANIAN SCOUTS IN D.P. CAMPS 1946 3 x Scout Post stamps	mint	10.00
MAG93 MALAGASY 1993 60 <sup>th</sup> Anny of the death of B-P o/p in green of Wildlife issue (1)	mint	3.00
MAV99U MALDIVES 1999 19 <sup>th</sup> World Jamboree 3 in sheetlet	used	2.25
MAL93 MALTA 1993 Scout & Guide commemorative (4)	mint	1.75
NAU78 NAURU 1978 70 <sup>th</sup> Anniversary of Scouting (3)	mint	0.60
NEP02 NEPAL 2002 Golden Jubilee of Scouting (1)	mint	0.20
NEP07 NEPAL 2007 Centenary of World Scouting (1)	mint	0.30
NEP07C NEPAL 2007 4 x large FDCs celebrating Centenary of Scouting + 10 <sup>th</sup> Anny of Friendship Clinic & Jungle Jamboree – this is a charity issue		5.00
NOR75C NORWAY 1975 14 <sup>TH</sup> World Jamboree postal stationery card –	unused	0.40
SWE70L SWEDEN 1970 strip of 5 labels for Scout Charity “ Scoutrorelsen”		0.30
SWE75C Sweden 1975 publicity postcard for Scout stamps issue		0.35
TOG82S TOGO 1982 75 <sup>th</sup> Anniversary of World Scouting MS	mint	2.00

## NOTES FROM THE PRESIDENT

Peter Duck

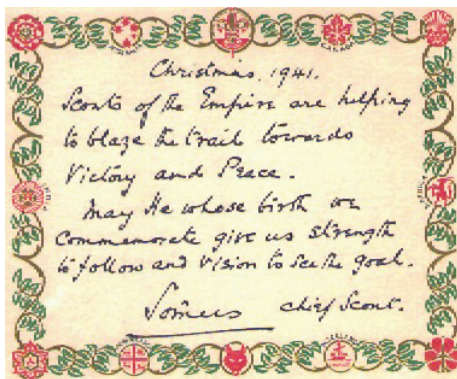
In sending Christmas greetings, I am using a few older postcards. Although I have a few earlier, comic Christmas postcards, I am depicting a few which were meant to inspire the Scouting spirit. (Terry has shown some of his comic postcards at Christmastime in our Bulletins over the past few years).

Firstly, a card, which is not actually a postcard, but which shows the Ernest S. Carlos painting of "The Pathfinder". It is signed by Hubert Martin, the first Director of the Boy Scouts International Bureau. I have a similar signed card with another Carlos painting "If I were a Boy again". These date from the 1930's.

Also from 1935, a lovely card from the 1<sup>st</sup> Battle (Sussex) Group with Scouts adoring Christ at the crib.



It isn't very often that one comes across the signature of Lord Somers, the second Chief Scout. This card, which was prepared by the Scout Shop was despatched for the first Christmas after the death of B-P.



After World War II, the Scout Shop in London produced a series of cards annually, some as postcards, others as folded cards with envelopes. Here are three of the postcard types.



**BESTWISHES**

**CHRISTMAS**



**GREETINGS**



**Christmas  
Greetings**

1901 Lilia (Peehacgoh).

I have not found many similar greetings cards from other nations, no doubt there are a number.



The Boy Scouts of America issued these two cards, the “Signalling” one was posted in 1915, the other is not posted.



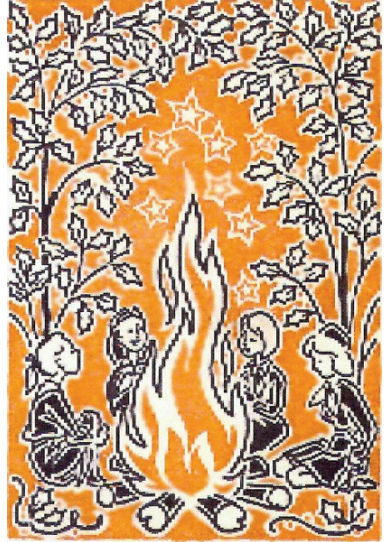
From France, we have a postcard of a Scout cutting mistletoe (perhaps he had lots of girl friends!). This design was later reproduced by a French Scout Collectors Group as a Christmas card.



From Sweden we have “Gott Nytt Ar” (Good New Year) postcards. The card with the Scout waving his hat was posted on 1.1.14, and the miniature card of Scout with torch was posted on 31.12.14. The small card with the signalling Scout was sent on 30.12.23.



From Denmark in the 1950's there was a series of lottery postcards for both Scouts and Girl Guides. Each card carried a lottery surcharge of 25 ore, and the Guide ones also included a lottery number. The posted cards which I have also carry a Christmas Charity label.





## Scout Humour on postcards

These continue to arrive, so I am including a second set herewith.

Firstly, to finish those from John Roberts in the UK, we have:



More from Gottfried Steinmann in Germany:



THE FIRST  
DOWNFALL



TENT  
INSPECTION

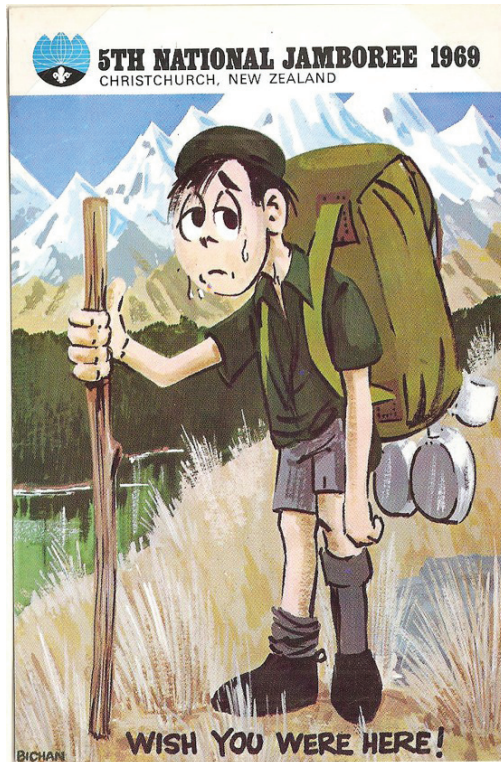
**Scouts – Picture postcards by Otto Pokorny, Austria**

*(Gottfried Steinmann in collaboration with W.O. Neubäck und Horst Ziegler)*

I have a further selection of the illustrations from Gottfried's article for future issues.



Finally, for this issue, from Paul Van Herpt in New Zealand:



## Famous Maritime Disasters: The Scouting Perspective

The most famous maritime disaster of all time is surely the sinking of the Titanic, closely followed by that of the Lusitania. At the time of their launch each of these ships was the largest ever to be built. The 100th anniversary the Titanic disaster was marked on 15<sup>th</sup> April last year, reviving media interest. Just prior to the writing of this article, a violin, believed to have been played as the Titanic sank, was sold for a nearly a million pounds! The reports made no mention of Scouting but caused me to reflect on some personal coincidences that have helped to reveal that both tragedies had Scouting links.

I have long believed that the role other UK youth organizations had in our Scouting history has been vastly under-appreciated, particularly within our own Association. The Church Lads' Brigade, the Boys' Brigade and the Y.M.C.A. were all encouraged to form their own official Scouts sections, stemming from their contact with Baden-Powell and his teachings *prior* to the formation of our own Association. I am always pleased then to meet with these organisation's historians, and to attend, on a regular basis, the Annual General Meetings of the Church Lads' and Church Girls' Brigade Historical Group. Today the entire Brigade has less than 3500 members, yet it manages to have its own Historical Group, something, which despite my best efforts, we have yet to achieve in UK Scouting.

At a recent AGM I met an old friend, Terry Hissey, editor of the Historical Group's magazine, *The Brigader*. He has recently written an article about Reginald C. Coleridge, a former CLB Captain and Adjutant in the CLB, 2<sup>nd</sup> Battalion, Ely Regiment, who died in the Titanic tragedy. Coleridge, when aged 23, had moved to Hartford, a parish in then County Town of Huntingdon by 1908, to carry on his profession as an advertising agent. There he was instrumental in starting the 1st Hartford Scout Troop which is documented in my book, the *Dawn of the World Scout Movement*. The Troop is on that elite list (less than 100 present-day UK Groups known), that can trace an unbroken record back to 1908.

Coleridge later moved to London, but maintained his links with Huntingdonshire Scouting, remaining as their Joint District Secretary. Terry Hissey was able to locate the photograph opposite of the Hartford Troop in the Huntingdon Archives. Coleridge is 2<sup>nd</sup> right on the first row. In his work with the CLB, he would have been well aware of Baden-Powell since the Founder's book *Aids to Scouting*, had been used since 1900 to instruct CLB members. Coleridge however would not have been part of the CLB's 'Incorporated Church Scouts Patrols', as that branch of Scouting did not start until March 25<sup>th</sup> 1909.



His fateful voyage on the Titanic was occasioned by the need to travel on business to Detroit, Michigan. Coincidentally his friend, the Rev AC Crossfield, also had to travel to America. Crossfield is sitting next to Coleridge in clerical collar, wearing the long white 1908 shoulder ribbons of a Scoutmaster, identical to those worn by B-P on Brownsea. Rev. Crossfield was able to ‘work his passage’ as a ship’s Chaplain, but Reginald was unable to travel with him, so he obtained a 2nd class passenger ticket on the Titanic, (No, 14263), which cost 10 guineas. Coleridge went down with the ship and his body was never recovered. (If

Coleridge had sent his friend a postcard whilst on board Titanic in Southampton, that postcard would today be worth in excess of £12,000!)

Coleridge was not the only Scout to loose his life in the disaster. Frederick William Hopkins was born in 1897. His father worked as a caretaker in Southampton for the White Star Line, so it is not surprising that his son ‘Fred’ should also find employment with them. Fred first sailed on the *Olympic* but signed on *Titanic* on 4<sup>th</sup> April 1912 as a plate steward, giving his age as 16. In fact he was not yet 15 and a keen Scout, a Patrol Leader in the 20<sup>th</sup> Southampton Troop. He and another 14 year

old cabin boy were youngest crew members to perish.

Following the sinking, there was a national appeal to aid the families of the deceased in which the Scout Movement was particularly active. Three post-cards are known illustrating the appeal. Two of these at least have been reproduced and can be bought on eBay’s ‘Buy it Now’, at £2.50 each.



The card above belonged to the family of one of the CLB club officers present at



the AGM. Appropriate to Coleridge's history it shows Scouts and CLB members working together.



**Left:** A street collection in Bridgeport, Dorset. The postcard which has a crease running through the left corner sold for £220 over 20 years ago.

**Below:** A street collection by the 8<sup>th</sup> Westminster Troop in London.

The Boy Scouts of America also had an appeal, and this too was recorded on postcards.

## *Lusitania*

In 2010 I was invited to give talks by the Heart of America Scout Council, whose offices are in Kansas City. Amongst their camp sites is the Theodore Naish Scout Reservation (850 acres), not far from Kansas City. Theodore Naish was an English immigrant, born one year before B-P in 1856, in Birmingham England. By 1899 he was resident in Kansas City. 'Ted' became a naturalized US citizen in 1891 by which time he was a successful civil engineer and an occasional preacher at his Methodist Church at Edwardsville near Kansas City. He and his wife Belle loved long walks through the forests there and he purchased a large 'wilderness' area on which 'Camp Naish' now stands. Ted wanted to



take Belle on a belated honeymoon to his homeland and they boarded the Cunard Line's Lusitania, in May 1915. They, with the other 126 US passengers, ignored the German Ambassador's warning printed in newspapers on the day the ship set sail, stating that British civilian shipping ran the risk of being sunk. As the world knows when nearing Southern Ireland, the Lusitania was torpedoed, without warning, by a German submarine, sinking it in 18 minutes. There are records of both Theodore and Belle





Karl Goetz, measuring 56.6 mm in diameter. It gloried in the sinking of the ship. The reverse side shows passengers queuing for tickets in New York and being served by the skeleton 'Death'. This was countered by the British who copied the medal and placed them in special boxes with a propaganda sheet strongly denouncing the sinking. The medal was sold for one shilling to aid wartime charities. It is still readily available today on eBay for between £20–30.

The sinking attracted worldwide condemnation, leading to the withdrawal of the Goetz medal. The loss of American lives was said to be a major influence on the US joining World War 1 in April 1917. Whether this is so or not, it is certain that the gift of Theodore Naish's land has helped to promote Scouting, and therefore World Wide brotherhood amongst countless young Americans over the last 87 years.

### Acknowledgements

Terry Hissey, Church Lads and & Church Girls' Brigade Historical Group. Huntingdon Archives.

Cambridge Independent Press. Encyclopedia Titanica, [www.encyclopedia.titanica.org](http://www.encyclopedia.titanica.org)

The Lusitania Resource, [www.rmslusitania.info](http://www.rmslusitania.info)

p

# SCOUT & GUIDE STAMPS CLUB

---

Club Website: [www.sgsc.org.uk](http://www.sgsc.org.uk)

---

**President: Peter Duck**

9 Broadlands Court, Kew Gardens Road, Richmond, Surrey TW9 3HW  
(Tel: 020 8948 5617)  
e-mail:- [peterjduck@hotmail.co.uk](mailto:peterjduck@hotmail.co.uk)

**Honorary Vice President: John Ineson**

Highfields Farm. Bures, Suffolk. CO8 5BN (Tel: 01787 227136)  
e-mail: [jpineson@aol.com](mailto:jpineson@aol.com)

**Chairman & Junior Section: Melvyn Gallagher**

47 Sycamore Avenue, Upminster, Essex RM14 2HR (Tel: 01708-224167)  
e-mail:- [mgallagher@mgnnet.freemove.co.uk](mailto:mgallagher@mgnnet.freemove.co.uk)

**Vice-Chairman: Bernard Tewksbury**

11 Claypits Road, Boreham, Chelmsford, Essex. CM3 3BZ (Tel: 01245 468835)

**Editor & Treasurer: Terry Simister**

1 Falcon Way, Chelmsford, Essex CM2 8AY (Tel: 01245-251190)  
e-mail:- [terry.simister@blueyonder.co.uk](mailto:terry.simister@blueyonder.co.uk)

**Secretary: Graham Osborne**

3 Camberry Close, Basingstoke, Hants RG21 3AG (Tel: 01256-328831)  
e-mail:- [camberry@tiscali.co.uk](mailto:camberry@tiscali.co.uk)

**Membership Secretary: Tim Reed**

10, Falconwood Close, Fordingbridge, Hampshire SP6 1TB (Tel: 01425-650961)  
e-mail:- [tim.p.reed@btinternet.com](mailto:tim.p.reed@btinternet.com)

**Committee Members:**

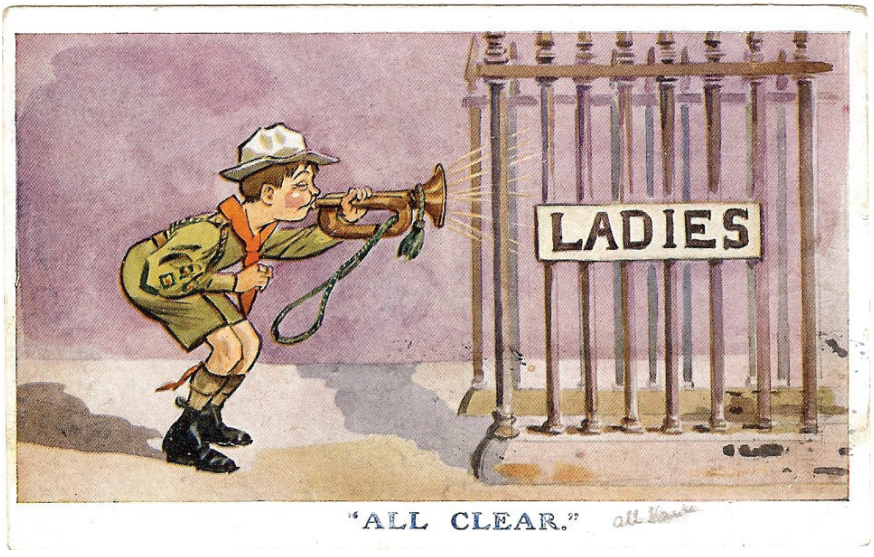
Randall Frank, Bob Lee

**Web Master:**

Randall Frank, Box 7638 Newport Beach, California 92658, USA.  
e-mail:- [rfrank@sgsc.org](mailto:rfrank@sgsc.org)



.....and to finish a further couple of my own humorous cards:



**"WILL YOU BE NEEDING A BABY SITTER, MISTER?"**

