

Scout and Guide Stamps Club BULLETIN

Volume 57 No. 4 (Whole No. 330)



See Colin Walker's further instalment regarding the 1924 Imperial Jamboree which starts on Page 19.

JULY / AUGUST 2013



Editorial

It doesn't seem that long ago that I was writing Editorials complaining about the extremely wet and cold weather which we were experiencing.

Now it has all changed and we have had a run of temperatures in excess of 34, which have only just been partially broken by thunder storms last night - I guess this means that I'm turning into a grumpy old man!!

Some very sad news this issue with the passing away of Peter Duck's wife Audrey who had not been well for some time but finally succumbed after being admitted to hospital for a short while. I'm sure that we all send our sincere condolences to Peter and assure him that we will all be here to provide support if he needs it.

This does mean that I don't have a new Sales List for this issue, so to keep matters active I am repeating the previous advert in the hope that those of you who did not find anything of interest last time will do so on a second look.

My own health is still tottering along. I underwent an angiogram last week and was told by the cardiac surgeon that there is nothing significant showing in the way of damage or blockages to any of my heart arteries, except some very minor one which are probably more dangerous to touch than to leave. I am now awaiting a cardio - inversion to slow the heart down and see whether this will put everything back to normal.

Terry Simister

FUTURE COPY DATES

September 17th and November 19th.

Please send copy, including photos, electronically - where possible.

FUTURE MEETINGS

We hope to be able to hold regular meetings in the UK during each of the Stampex Exhibitions each year. The next of these will be on 21st September 2013 at Stampex (14.00 - 16.30) when there will be a Committee Meeting from 14.00 followed by a General Meeting. (*timings to be confirmed*)

The General Meeting will be an opportunity for members to show new acquisitions and favourite material to others and discuss any matters with members of the Committee.

Before the invention of photography the silhouette was a popular and cheap way of producing a likeness. Artists of scout stamps have over the years found that designs using this art form can be very effective on a very small scale such as stamps.

Scouts in silhouette before a campfire is an enduring theme, my favourite being the 1963, one shilling triangular from Nigeria and the 1968 L50 stamp from Italy. Similar Stamps are seen on the 1964 20F Malagasy Republic stamp, a 1968 c0.25 value from Costa Rica (reproduced later in 1985 on a stamp on stamp issue) the 1977 18c from Grenada and and a 1995 stamp of Slovenia.

Two very similar designs with scout buglers are to be seen on the 1975 15c from Antigua and the 1991 30 value from Mongolia - buglers in silhouette are also on the 1959 set from Taiwan.

Camp views are depicted on the 1957 Girl Scouts World Camp stamp from the Philippines, the 1968 9d stamp from Gibraltar, and both stamps issued from Eire in 1977.

Another popular theme is hiking seen on the 1976 200F value from Mali, a 2007 stamp from Kosovo and both the 2010 and 2012 stamps from the U.S.A.



There are other silhouettes on scout and guide stamps and I am sure that we shall see more. Postcard collectors can find examples too, such as the 1929 Jamboree novelty card published by the Birkenhead Advertiser.

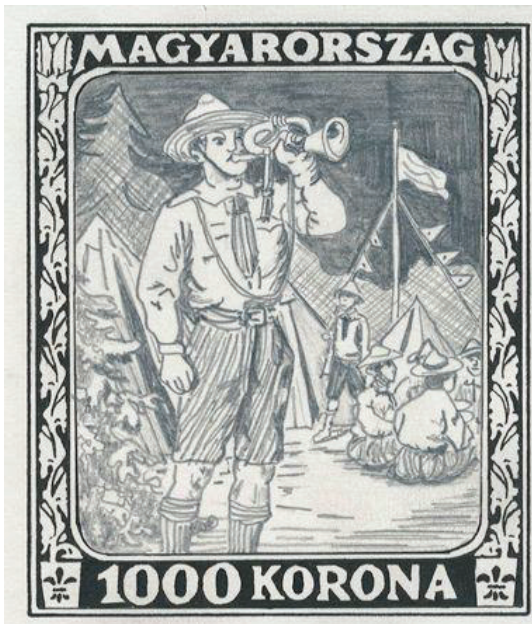


Please don't forget that if you would like to receive a copy of this issue and all further issues of the Bulletin by electronic mail just send the following message to me at terry.simister@blueyonder.co.uk :-

I would like to receive future copies of the Scout and Guide Stamps Club Bulletin by electronic mail and the appropriate documents should be sent to the address used for this transmission.

I was interested to see in the recent Christoph Gärtner auction in Germany, Lot 4307 "Scouts 1925, large size, hand painted essay of the Sport issue 1000 Kr, showing a Scout blowing a trumpet in front of a tent. In ink and pencil. size 11.5 x 9.5cm (4½ x 3¾ inches) on card. UNIQUE!" This

looked good as you can see in the left hand photograph, and of interest to collectors as it was the first stamp to show a Boy Scout. Below written in pencil were the words in Hungarian "Accepted design as agreed" with an unreadable signature. As I was going to Hungary in June, I decided to take a large photocopy of this to show to various stamp dealers. It was not until near the end of my visit that a dealer, who I had known for many years, said that this was not the original by the artist Ferenc Helbing (1870-1958). He showed me a few essays that he had in his own collection by the same designer, but the one sold had nothing like the same standard of work. He suggested



that I went to the Postal Museum where the director kindly showed me on their computer the original essay by Helbing which is in their collection. This was of superb quality, (the one sold looked poor when enlarged) but I was told that they were not able to let me have a copy or scan unless I wrote to the Hungarian Post. I did this but they wrote back "we are unfortunately not allowed to send a copy of the original design to anyone", so I can only show the actual stamp. Somebody paid a high price of €8000 (about £6960, US\$ 10,450) plus of course the buyer's premium, against the original estimate of €800. We have no idea when this was copied or produced, but I guess we must say "Caveat emptor" – buyer beware"



In the June auction of Viennafil of Vienna, they sold two colour trials of the 1962 Scout stamp in both light green and red. I do not remember having seen these before and guess they must be very scarce. Both estimated at €700, they each made €750 (£650). One advantage of having your magazine sent online is that you will see the photos in colour.



I was interested to read Peter Duck's article last month on the covers sent into various World Jamborees which included the 1957 cover with the cachet "Camp Disbanded Return to Sender". Having one of these in my own collection, I decided to do the same for the 1995 World Jamboree held in the Netherlands. A few days after the camp closed, I sent a cover including a letter to a Hungarian friend who was at the camp. Expecting this to be returned to me with a similar cachet, I wrote my home address on the reverse. Nothing happened for a couple of weeks, after which I received my cover, but this had been posted to me from our Scout H.Q. in the U.K. The Dutch post office or the Jamboree organizers had sent all letters and correspondence back to the HQ of the country from where the letters had been posted. They were then opened (which they had no need to do as my address was on the reverse), so this did not please me very much!

Last month I wrote about "Is your journey really necessary" but I am pleased to say that I have now heard that I was not the only member of our club who made the wasted trip to Hamburg to view the 92 boxes, but with the wrong description. An overseas member has also written to say he also had a wasted journey.

On a personal note, I was delighted at our Annual General Meeting to be made the Club's Honorary Vice President in the place of the late Ron Howard. I originally held the position of Vice President from 1990-1997, when I was demoted / promoted? to become Chairman!. I joined the former SSCC in 1957, and being No. 56, I am now the longest surviving club member.

Scout collection auctioned in Switzerland

Rölli Auctions International stamp auctions

- Online Auction 13-2 on September, 27th 2013
- 54th International Rölli Auction: February, 6th-8th 2014



Rölli-Schär Ltd.

Seidenhofstrasse 2
CH-6003 Lucerne

Tel. +41 41 226 02 02

Fax +41 41 226 02 01

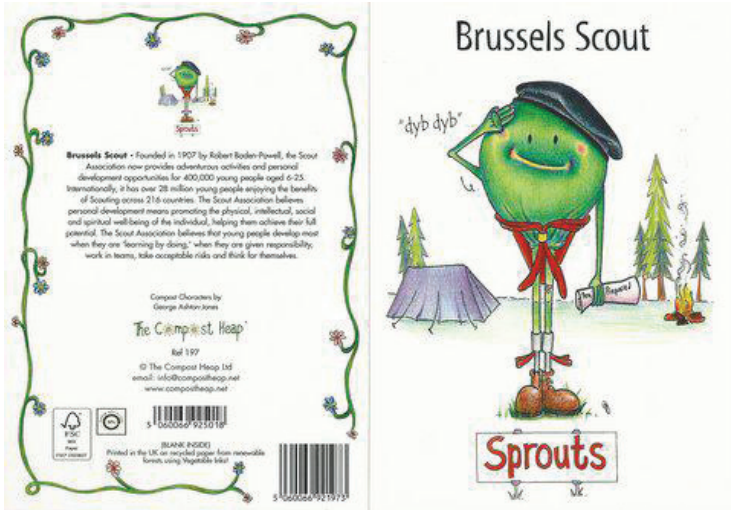
info@roelliphila.ch

www.roelliphila.ch

In our two forthcoming auctions we are proud to offer the outstanding and internationally awarded Scout collection of Walter Grob.



There is still some “Scout” humour around as this greetings card which was recently sent to the Editor seems to prove.



Certainly back in the early days of scouting there were many postcards issued - the majority of which were quite serious in their portraits of the emerging Movement. However, amongst these there were a growing number of humorous portrayals and these certainly continued until well in the 1960's here in the UK.

Perhaps we could bring back memories of those days by putting some of these comedy cards into future issues of the Bulletin - say a couple of pages of “Scout Humour through the Ages” in each issue. Obviously I have some UK ones in my collection but I would like to make this as much of a “world-wide” view as possible - so if you have any humorous cards, stamps or other material please let me have an electronic copy and I will start the fun from the next issue

“HERE'S SIXPENCE SONNY, - NOW RUN AWAY AND PLAY.”
“SORRY COULDN'T TAKE THE MONEY MISTER AFTER WATCHING
- YOU DO YOUR GOOD DEED FOR THE DAY.”



A QUESTION.



The above photo was sent to me by member John Galpin, who says that it comes courtesy of his granddaughter.

The wording on the card actually reads:-

**Presenting the colours to the Boy Scouts
Royal Review Knowsley
Parade St Georges Hall May 5th 1909**

As this is a very early presentation of colours I wondered whether any of our members knew anything about the occasion - especially as to who might have made the presentation as there are no obvious members of the Royal family in the photo and which Scout Troop was receiving what appears to be a flag of the cross of St. George.

SALES SERVICE

The following items are available. Orders to Peter J.Duck, 9 Broadlands Court, Kew Gardens Road, Richmond, Surrey TW9 3HW. Payment with order please: cheques payable to P.J.Duck, USA \$ bills or EURO notes accepted at current rates. Postage extra – Inland 70p for 1st class post (any packets weighing over 100 gr will be sent by 2nd class post). Overseas £1.30 for stamp orders only, covers/cards orders £1.75.

CLEARANCE OF CLUB POSTCARDS

SPC1 3 x postcards commemorating 75 th Anniversary of 1 st World Jamboree 1995	0.45
SPC2 5 x postcards issued for 21 st World Jamboree 2007	0.60
SPC3 EuroScout 2010 postcard	0.25
SPC4 EuroScout 2010 postcard with postmark on face	0.50

A MISCELLANY FROM STOCK

MINT USED

XC82 1982 Croham Valley Joint Venture Unit Christmas Post (depicting a cat) (1)	0.20	-
XR82 1982 Rotherham Scouts Christmas Post (1)	0.20	-
XBH Burgess Hill Scouts Christmas Posts 2 x used cover with different handstamps	-	0.30
IS82 ISO ISLAND (Sweden) 1982 75 Years of World Scouting (4 in block)	0.50	-
IS82S ISO ISLAND 1982 75 Years of World Scouting 2 x MS	0.50	-
EYN74 EYNHALLOW (Scotland) 1974 "Scout Anniversary" + fruits in sheetlet of 8	-	0.25
NAG74 NAGALAND (India) 1974 "Scout Anniversary" + birds in sheetlet of 8	-	0.25
GUI88 GUINEA 1988 Scouts/birds/butterflies – 5 low values	-	0.25
AUS48 AUSTRALIA 1948 stamp (1) used with part of Pan-Pacific Jamboree slogan	-	0.25
GB74S G.B. 1974 Privately produced souvenir sheet (postally valid) showing B-P	0.60	

LABELS:

ICE62L ICELAND 1962 50 th Anniversary of Scouts & Guides – strip of 5 labels	0.50	-
LBY62L LIBYA 1962 Third Scout Philia label (1)	0.25	-
MEX65L MEXICO 1965 20 th World Scout Conference label (1)	0.25	-
NOR-XL NORWAY Scout/Guide Xmas Charity labels 1995, 1997 (Lady B-P) & 1998 (3)	0.45	-
PAK73L PAKISTAN 1973 Silver Jubilee Jamboree label (1)	0.15	-
SWZ82L SWITZERLAND 1982 50 th Anny of Opening of Guides "Our Chalet" (20 labels)	2.00	-
US48L U.S.A. 1948 Boy Scout Week "The Scout Citizens at Work" label (1)	0.20	-
US57L U.S.A. 1957 4 labels – Cub Scouts, Boy Scouts & Explorers (4)	0.40	-
US57C U.S.A. 1957 "Onward For God and My Country" cachet p/c – design as above label	0.25	-
US-CS U.S.A. (1960`s?) label showing 4 Cub Scouts from ethnic groups (1)	0.15	-
US80C U.S.A. 1980 small card commemorating 70 th Anniversary Boy Scouts of America	0.25	-
19WJ 1998 Cut-out from souvenir sheet showing Lord B-P + World Jamb, Chile emblem	0.20	-
GB83L G.B. 1985 15 th World Jamboree hand o/pnt on block of 4 Blair Atholl Camp labels	0.30	-
GB95L G.B. 1995 18 th World Jamboree hand overprint on block of 4 1982 Camps labels	0.20	-
GB07L G.B. 2007 Centenary of Scouting – 9 different self adhesive labels	0.30	-
LN63 LIECHTENSTEIN 1963 1 st Glasgow Scouts Liechtenstein Camp label (1)	0.25	-
RUS57 RUSSIAN SCOUTS IN EMIGRATION label for Jubilee Jamboree 1957 (1)	0.25	-
UKR57 UKRAINIAN SCOUTS labels (6) commemorating Jubilee Jamboree 1957	4.00	-
UKR61 UKRAINIAN SCOUTS 1961 50 Years of Scouting strip of labels – in 3 colours	1.00	-
BAN85 BANGLADESH 1985 3 rd National Jamboree (1) with overprint printed DOUBLE	12.00	-
GUY95 GUYANA 1995 18 th World Jamboree print on souvenir sheet (card) of Owl (1)	4.00	-
LES82B LESOTHO 1982 75 th Anniversary of World Scouting (5 x 2 + MS in booklet)	7.50	-
MAL67 MALI 1967 12 th World Jamboree triptych (2 stamps + label)	1.25	-
NGR85 NIGER 1985 75 th Anniversary of World Scouting MS with MOPHILA`85 overprint	1.50	-

At the meeting on 23rd February, 2013 I gave a display and included was a recent page that I have updated of Forged and Genuine stamps from the Czech 1918 issue. It was generally thought that this should be included in a future Bulletin so here we are with the attempt.

Forgeries began to appear a few years after these Scout stamps were issue. The forgers however made a number of mistakes in trying to copy the originals and these are shown below and over the next three pages.



Genuine 10h

- 1) The lion's crown has a well-defined central cross.
- 2) There is a small line in the mane.
- 3) The left leg is separated from lion's body by a long cut.
- 4) The outline of the body is defined by a continuous line.
- 5) The hook shaped accents of letters Š and Č are sharp.
- 6) The letter D lies below the letter S and the Í lies below the space between U and Ž.



Forgery 10h

- 1) The lion's crown is similar to the original 20h stamp.
- 2) The small line in the mane is absent.
- 3) The left leg is separated from the body by a short cut.
- 4) The body outline is deformed and broken.
- 5) The hook sharp accents of letters Š and Č are smaller.
- 6) In 'NÁRODNÍ' the letters DNÍ have been shifted left.
- 7) The nick below the back knee is similar to the 20h original.
- 8) A spot appears between the 1st and 2nd claw right leg.



Genuine 20h

- 1) The tongue, rounded upwards, has a very thin line below.
- 2) Second strand of lower mane has a shorter thicker outline.
- 3) The contour of left front leg is finished by a short cut into the body.
- 4) The paws have distinctive sharp claws
- 5) Under the left hand back knee, there is a short cut.
- 6) The Š and Č in 'POŠTA ČESKÝCH' are regular in shape.
- 7) The letter B in 'SLUŽBÁCH' is the normal shape.



Forgery 20h

- 1) The lower jaw is attached by a thicker line than the orig.
- 2) Second strand of the lower mane has a longer thin line.
- 3) The outline of the left front leg forms a continuous curve.
- 4) The claws are blunt.
- 5) Under the left hand back knee, there is no cut
- 6) The letter Č in the word ČESKÝCH is deformed.
- 7) The letters S are of irregular shape.
- 8) The B in 'SLUŽBÁCH' has is the usual shape.
- 9) The line above the right back knee leg finishes in a point.

World Scout Jamborees always have a temporary on-site postal facility. Their main purpose & workload is to handle large volumes of outgoing mail from the 15 to 40 thousand attendees. There is a much smaller volume of incoming mail as well, which they need to distribute. The incoming card below is one example which makes one wonder who it should be delivered to.



It is also an example where it is necessary to look beyond the stamp, the cancel and the cachet while browsing through a dealer’s stock of covers. It is postmarked from Brussels, Belgium on July 29, 1937, two days before the 5th World Jamboree started in Holland. It has four stamps totaling 1 Fr., including an air post one and a definitive with a seal attached advertising a tonic (Cachets du D:Faivre) “for all illnesses” (Contre toutes douleurs).

There is no immediate indication that it is a scout cover. However, a look at the addressee shows it to be addressed to “Scout Mondial” (World Scout), Vogelenzang, Hollande, which is where the Jamboree was being held. Also, on the left side just above the Par Avion label, it reads (translated) “This card is for a scout who is a philatelist”. Hmmm ... I wonder how many scout philatelists were there (1% of attendees would mean 150 to 400)! And who should get the card?

On the back of the card was a hand-written message saying (again translated) “For any eager youth, please send me 3 World Jamboree stamps on a postcard with your address and I will send you stamps from this country with pleasure. Thank You”.

This was a creative way of getting some World Jamboree philatelic souvenir, and of picking up an additional mail-order customer at the same time! And it makes this particular postcard an interesting souvenir itself!

(First published in the July/August 2003 SOSSI Journal, and then in the GTAPA PhilaJournal, Summer 2012 issue)



PRESS RELEASE

APRIL 2013

BTA EXPANDS INTO OPEN, SOCIAL & POSTCARD PHILATELY

BEGINS

The BTA is officially adopting Open philately, social philately and postcard collecting in an attempt to broaden its appeal beyond traditional thematic collectors. In doing so the BTA will become the UK's first national society for ALL theme-based collectors.

The BTA is taking this positive step in response to the increasing popularity of theme-based collecting, i.e. collecting around a theme or story, and especially disciplines which encompass non-philatelic material or material with a social connection. In particular, themes and philatelic subjects are increasingly supported by or include ordinary personal or family stories with connected material, including letters, photos and postcards alongside traditional philatelic items.

Thus the BTA will strive to promote, support and improve understanding of all aspects of theme-based collecting and all its disciplines. Special pages in Themescene, the BTA's magazine, have been introduced which specifically cater for open, social or postcard collectors. Looking forward, there will be workshops and seminars, some organised with the ABPS, on collecting and exhibiting; meetings featuring speakers and displays from all theme-based fields and the BTA will stage special events every time the Pictorial classes form part of the Spring Stampex exhibition (next such occasion 2014).

The BTA will also from this year be staging an annual social competition as part of its annual competitions: the John Fosbery Trophy. This competition, with no rules, is perfect for those who want to show something different or innovative and who want to gain experience of competing. The competition will be staged at the South of England Stamp Fair, South of England Centre, Ardingly, Sussex on Saturday 12th October 2013. Entry forms are available from the BTA website at www.brit-thematic-assoc.com

ENDS

FOR MORE INFORMATION CONTACT

PUBLICITY OFFICER • SIMON MOORCROFT

EMAIL: SIMON.MOORCROFT6@BTINTERNET.COM • TEL: 07532045434 • FAX: 01206 542901

WEB: WWW.BRIT-THEMATIC-ASSOC.COM

BRITISH THEMATIC ASSOCIATION'S 2013 COMPETITIONS

To be held at The South of England Stamp Fair & Sussex Convention, Norfolk Pavilion, South of England Centre, Ardingly Showground, Ardingly, RH17 6TL

SATURDAY 12 OCTOBER 2013 10.00am – 4.30pm

We want to provide something for ALL thematic collectors.

The John Fosbery Thematic Trophy competition requires 16 sheets inside protectors and is for collectors who have never won a thematic medal in a National competition.

It has NO other RULES! The entries will be judged by visitors to the Exhibition.

The BTA Cup Competition is judged to National Thematic competition rules and requires 32 sheets, any theme, inside protectors, to fill 2 frames. This competition is intended to be a stepping-stone towards entering a National thematic competition. The entry fee is £15.

The Inter-Federation Thematic Competition for the Healey & Wise Salver is a team event, judged to National Thematic Rules. It requires a 16-sheet entry from 3 individual members of the Federation. This competition will also be judged to National Thematic Rules.

Please complete the form over and send to -

Brian Sole, BTA 2013, 49 Westcar Lane, Hersham, Walton-on-Thames KT12 5ER

Telephone: 01932 220677; e-mail: brian.sole@btinternet.com

CLOSING DATE FOR RECEIPT OF ENTRY FORMS IS FRIDAY 14 September 2013 and receipt of the sheets by Friday 28 September 2013 – Details will be sent to entrants.

British Thematic Association Competitions 2013 Entry Form.

I wish to enter:

A. The 16 sheet JOHN FOSBERY TROPHY Competition (please tick) OR

B The 32 sheet BTA CUP competition..... (please tick) OR

C The INTER-FED Thematic Competition..... (please tick) AND

enter the NAME of the Federation/Association.....

Name (If "C", name of contact)..... Tel No.....

Address.....

..... Postcode.....

E-mail address.....

Title of Entry (A or B).....

Names of Exhibitors and Titles of exhibit in C) Inter- Federation Thematic Competition

Entry 1).....

Entry 2).....

Entry 3).....

Re entry to the JOHN FOSBERY competition -

I have not won a medal in the Thematic Class of a National or International Exhibition.

Re entry to the JOHN FOSBERY. the BTA CUP or the INTER-FED Thematic competitions -

I/We accept that the material is submitted entirely at my/our own risk and I/we undertake to make my/our own arrangements with regard to the insurance of the entry whilst it is out of my/our possession; this includes all transit risks, temporary housing of the entry and its display at Ardingly Showground.

I/we confirm that all information on this form is correct and, if entering the BTA CUP competition, enclose a remittance of £15, payable to the British Thematic Association.

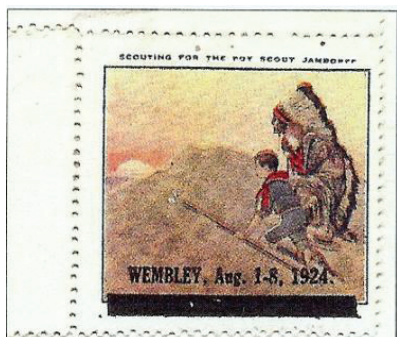
Signed.....Date.....

The Ephemera and Collectables associated with the Imperial Jamboree - Wembley, 1924.

Part II.

When I wrote what is now to be regarded as Part I of this two part series, it never crossed my mind that there would be a part II, and indeed there could not possibly have been without the generosity of our Chairman Peter Duck, and his chief scanner, our new Honorary President, John Ineson. The scans received, as you will see, are of such significant artefacts such that I felt it was a duty as well as a pleasure to document them.

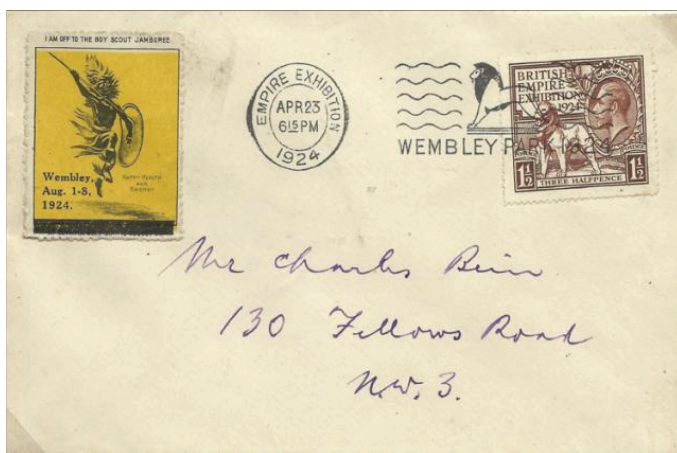
Below: One of the three over-printed poster stamps produced from remaining stocks of the 1920 World Jamboree poster stamps, This example was painted by artist John Hassall, a friend of B-P, who provided the art work for the covers of the six part work 'Scouting for Boys' in 1908. His artwork was used on the postcard on the front cover, which is signed by the artist in facsimile.



The St George's day postmark on the cover below makes this item very special. It is a 'First Day Cover' for the first ever British commemorative issue i.e. the two stamps produced for the British Empire Exhibition - (see last issue of the Bulletin) and it has the official 'Empire Exhibition' postmark (also a

first).

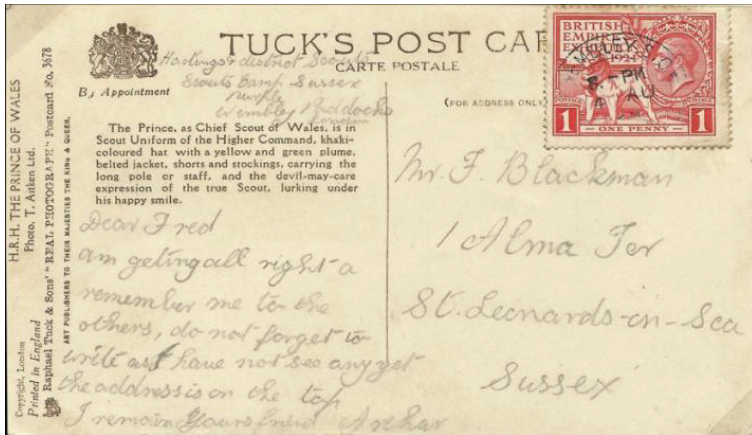
first).



The Baden-Powell artwork Zulu chieftain poster stamp gives the cover its Scout

It was not added later, but is doing its job, giving advance publicity for the Scouting Event of the year Aug. 1-8th, 1924.

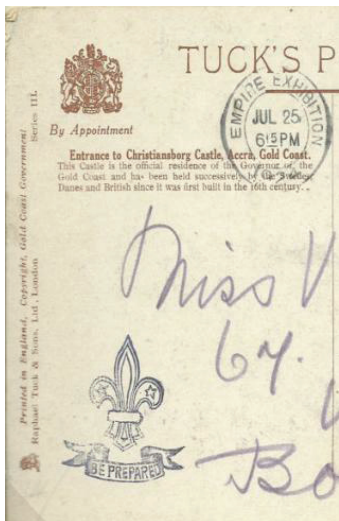
In this card, we are getting very close to what I regard as the Holy Grail- (which I appreciate might not quite be the same as that a Scout Philatelist might nominate). Here we have a Scout postcard (Tucks 3678) showing the Prince of Wales, who



attended the Jamboree, in Scout uniform. The postcard was sent out of the Jamboree with a British Empire Exhibition stamp and Wembley postmark and also - deep joy - with a message from a Hastings Scout, who was camped at the Jamboree in the Purple sub-camp at Wembley Paddocks. He writes to his friend Fred, I am getting (sic) [on] all right -remember me to the others, do not forget to write as we have not seen any [mail] yet. I remain your friend, Arthur'. It would be interesting to know if Arthur ever received any 'in-coming' mail whilst at the Jamboree. 'Incoming' mail is nearly always so much rarer than 'outgoing'.

The postcard detail overleaf above left with the rubber stamped Fleur-de-Lys cachet was posted just four days before the Jamboree opened proving that Scout Administrators were already on site preparing for the event. The postcard used was one of a series of three sets sold at the Exhibition produced by Tucks. The show not, as the caption on the back of the card would have you believe, buildings from distant part of the empire, but replicas of these building built in the pavilions of Empire countries at Wembley.

The envelope posted on June 24th 1924, was printed by the 'West Riding of Yorkshire Scout Association'. It has a green cachet showing a Scout following tracks (presumably to the Jamboree). The footprints contain the messages 'Good Luck',



'Happiness' and 'Joy'. The cover was posted on June 24th 1924. Its chief philatelic interest is however the British Empire Exhibition Meter Mark including the name 'Sheffield'. It seems likely that other cities besides the capital of South Yorkshire would have similar meter marks. This example barely touches one and half pence definitive issue stamp, which was then treated to a strike from an indistinct hand cancel. (The letter is addressed to Dr Solly of Cold Bath Road, Harrogate. It is a Yorkshire address - so bath has to rhyme with ass!) A quick check on the Internet reveals that the road has not changed its name in the last 250 years!

A very rare stadium passes, No. 7311.



12,000 participant Scouts, took part in the arena events which was boosted to 21,000 by incoming British Scouts to the Scouts' Own etc on Sunday 3rd of August. The pass is stamped. 'Issued for admission of one Boy Scout' as so was for one of the participants rather than a visitor to the Jamboree. The Pass also states that it '...does not admit to the exhibition or the stands or enclosures in the Stadium'.

The Departure Card opposite, though postcard sized, was never intended to be sent through the post, but to be filled in by contingent leaders and returned, as stated on the bottom of the card, 'to the Office of Camp Commandant'.

178

DEPARTURE CARD.

Unit	Camp	Block
Mo. 1. BRIDLINGTON EAST RIDING YORKSHIRE.	YELLOW.	

Date of Departure 9.8.24 1.40.

Number leaving _____

Tents returned to Q.M. 1 OK

Signature of Q.M. _____

Site Inspected to June

NOTE. If Transport is required for Baggage,
24 hours notice must be given to the
Office of the Camp Commandant.

*To be returned to the Office of the Camp
Commandant.*

This particular card was completed by the contingent leader of the 1st Bridlington Troop, East Riding of Yorkshire, who were staying in the 'Yellow' camp on Wembley Paddocks. They intended to depart on 9th August, one day after the closure of the Jamboree, at 1.40 p.m.

Whatever arrangements needed to be made, such as the return of tents etc were completed to the satisfaction of the Quartermaster who signed the card, as did the Scouter who inspected the site before the Yorkshire Scouts were allowed to leave. The card was passed by the Camp Office which was run by Rover Scouts.

A model of efficient organisation!

To misquote Seb Coe, 'They did it right'.

I am indebted to Keith Wilson of the International Badgers Club who kindly sent me the neckerchief shown on the back cover. He had surmised that it might have been worn by a Wembley Rover, and he could well be right. As you can see, it carries exactly the same logo as that of the Wembley Exhibition and so also of the Imperial Jamboree. As demonstrated by 'Departure Card', the manning of the Jamboree Office (and many other tasks) was undertaken by Rovers. My feeling is though that the neckerchief was not just for Rovers but, as became the norm in later Jamborees, it was probably worn by all 'staffers'.

Mention of Rovers prompts me to tell you of the latest 'interminable database' to take over my life. I have acquired a large collection of Rover Badges, and with the help of the Badgers Club have added to it with further badges or images of British Rover Crews at home and abroad, including shoulder tapes. If you were invested as a Rover (then you still are a Rover!), I would be very pleased to hear of your Crew, and receive scans or sketches of any special badges or name tapes worn. The database will help record the existence of the many Crews that gave great Service to Scouting before they were finally abolished in 1967.

SCOUT & GUIDE STAMPS CLUB

Club Website: www.sgsc.org.uk

President: Peter Duck

9 Broadlands Court, Kew Gardens Road, Richmond, Surrey TW9 3HW
(Tel: 020 8948 5617)
e-mail:- audreyduck1@hotmail.com

Vice President: John P. Ineson

Highfields Farm, Bures, Suffolk. CO8 5BN (Tel: 01787 227136)
e-mail: jpineson@aol.com

Chairman & Junior Section: Melvyn Gallagher

47 Sycamore Avenue, Upminster, Essex RM14 2HR (Tel: 01708-224167)
e-mail:- mgallagher@mgnet.freemove.co.uk

Vice-Chairman: Bernard Tewksbury

11 Claypits Road, Boreham, Chelmsford, Essex. CM3 3BZ (Tel: 01245 468835)

Editor & Treasurer: Terry Simister

1 Falcon Way, Chelmsford, Essex CM2 8AY (Tel: 01245-251190)
e-mail:- terry.simister@blueyonder.co.uk

Secretary: Graham Osborne

3 Camberry Close, Basingstoke, Hants RG21 3AG (Tel: 01256-328831)
e-mail:- camberry@tiscali.co.uk

Membership Secretary: Tim Reed

10, Falconwood Close, Fordingbridge, Hampshire SP6 1TB (Tel: 01425-650961)
e-mail:- tim.p.reed@btinternet.com

Committee Members:

Randall Frank, Bob Lee

Web Master:

Randall Frank, Box 7638 Newport Beach, California 92658, USA.
e-mail:- rfrank@sgsc.org



The final item from Colin Walker's follow up part 2 regarding the Imperial Jamboree of 1924, starting on page 19.